

# Stewardship Meeting

February 24, 2022



GREATER  
FREDERICTON  
SOCIAL INNOVATION



INNOVATION SOCIALE  
DE LA RÉGION DE  
FREDERICTON

# CIN Regional Plan

## Overcoming Poverty Together 3 : CIN Priorities



### Improve access to mental health and addictions services

- Partner for Youth: Counselling Services ( \$8K)
- Capital Region Mental Health & Addictions: Youth Hub (\$8.6k)

### Provide inclusive access to sport, recreation and leisure activities

- City Fredericton, UNB, towns, municipalities: Play Boxes (\$16k)

### Support children and youth through school food programs

- Anglophone School District West: Milk Dispensers (\$16K)

### Implement Regional Transportation Plans

# CIN Regional Plan

## Regional Volunteer Drive Service



Partnership between GFSI and **Urban Rural Rides** to deliver regional volunteer drive service

- Distributed model, 1-2 local Volunteer Champions and 5-10 drivers
- Launching March 2022, in Hanwell - Kingsclear, Cambridge Narrows, & Oromocto with support of Age Friendly Committees/ councils
- Discussions underway in Minto, Chipman, New Maryland
- Pending funding approval from ESIC for \$44K for period Nov – March 2022



# Federal Emergency Food Response : \$80k

## Community Food Centers Canada



### Community Food Smart: \$40 K

Distributed to 18 local distributors and 13 CFS operations in the province

- Redeemable as CFS promotional bags and as grocery gift cards

### Nourishing Minds NB : \$40K

- Distributed to School Districts in the province to buy food to support increased participation in school food programs



NOURISHING MINDS N.B.  
NOURRIR POUR APPRENDRE N.B.

# Partnerships for Impact

## National School Food Policy

### Coalition Healthy School Food

- Terms of Reference for federal government
- \$200 M each year for 5 years
- Mandate letters of Agriculture, Children, Youth and Families, Health
- Next steps recommended: release of funding to provinces for programs and infrastructure + standards for implementation

## Basic Annual Income

### Atlantic Forum

- Exploratory discussions re forming an Atlantic voice
- Adopting common terms of reference/ mandate letters
- Discussion re an Atlantic Symposium to promote education, raise awareness, engage politicians

# Local Governance Reform



## Early Days

Effective January 2023

Transition teams appointed

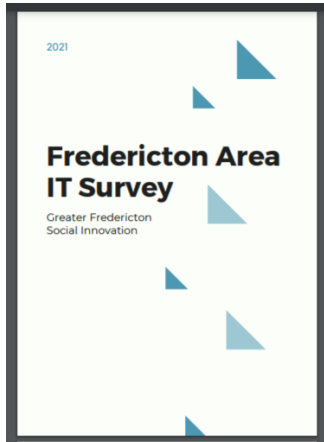
Developing work plans

## Advice from CIN's

Community Development Definition

Committee or Adoption of CIN Advisory Committees

# Growing Civic Tech (96K)



- IT Survey completed over 100 respondents  
48% new Canadians
- How to Civic Tech Toolkit created in French & English
- Moncton 1<sup>st</sup> meeting 48 people (Saint John started in April 2021)
- Bathurst, PEI & Halifax
- 8 Civic Tech training courses 5 upcoming
- ACOA Funding partner



**Fredericton**



Atlantic Canada  
Opportunities  
Agency

# Non-profit Data Collaboration (344K - 3 years)

## Hayley Aucoin



## Non-Profit Data Collaboration

- Tool kit launch
- Onboarded 21 NPO's
- Community Prosperity Hub





### **Cohort 1:**

- Greener Village
- Fredericton Public Library
- Will-Doo Cycle
- Meals on Wheels
- Noulab
- Fredericton Homeless Shelters
- John Howard Society
- Skigin Elnooq
- Opal Family Services
- St. Mary's First Nations
- Youth in Transition

### **Cohort 2:**

- Family Enrichment
- CHIMO Helpline
- Under One Sky
- Adult Literacy
- The Ville
- New Brunswick Deaf and Hard of Hearing Services
- Conservation Council
- Liberty Lane
- Nashwaak Watershed
- Slow Roll

# Non-profit Data Collaboration

Custom Data Projects & Analysis for:

**Fredericton**



# An Innovative Approach to Business Networking & Employment Support (378K)



- Partners ACOA, GNB's Workplace Connections & PETL
- Employers want experience
- Support Civic Tech growth
- Civic Tech as an employment accelerator
- Mentoring



Atlantic Canada  
Opportunities  
Agency

# An Innovative Approach to Business Networking & Employment Support

## Yu Ren



- Team management
- Administrative support
- Reporting and budget tracking



Atlantic Canada  
Opportunities  
Agency



# An Innovative Approach to Business Networking & Employment Support

## Ahmed Shaltout



- Meal Planner
- Transit Fare Assistance Program

**Fredericton**  **TRANSIT FARE ASSISTANCE PROGRAM**

### TICKET USAGE FORM

Please fill out this form every time you give bus tickets to one of your clients.

\* Required

#### 1. Organization/Agency giving out the tickets \*

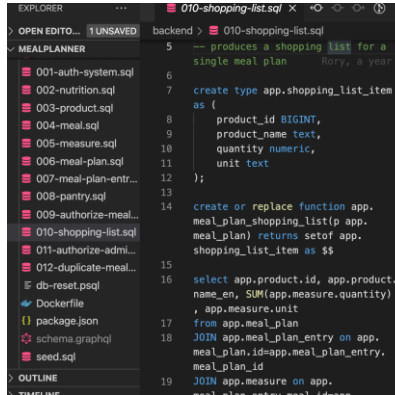
(New Brunswick, Nova Scotia, Prince Edward Island, New Brunswick, Newfoundland and Labrador)



**Atlantic Canada  
Opportunities  
Agency**

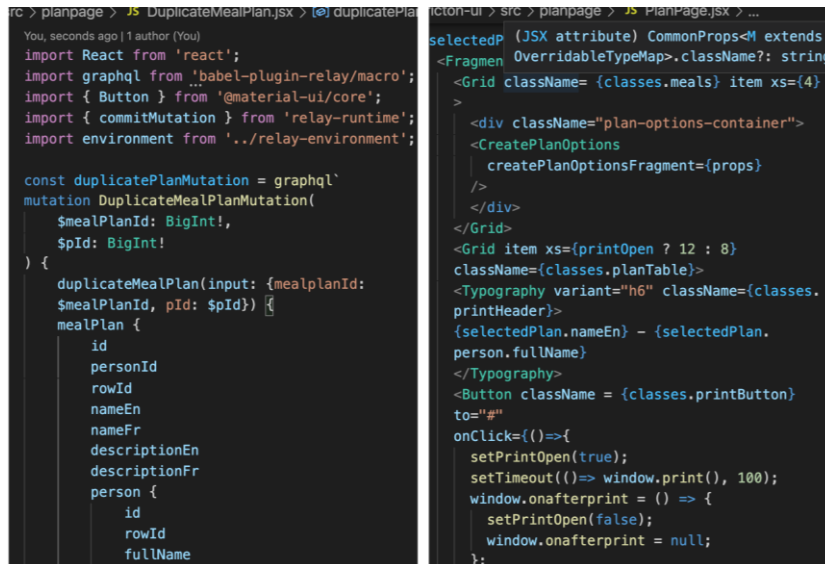
# An Innovative Approach to Business Networking & Employment Support

## Shanthi Shanmugam



```
EXPLORER
  backend > 010-shopping-list.sql
  MEALPLANNER
    001-auth-system.sql
    002-nutrition.sql
    003-products.sql
    004-meal.sql
    005-measure.sql
    006-meal-plan.sql
    007-meal-plan-entr...
    008-pantry.sql
    009-authorize-meal...
    010-shopping-list.sql
    011-authorize-admi...
    012-duplicate-meal...
    db-reset.psql
    Dockerfile
    package.json
    schema.graphql
    seed.sql
  OUTLINE
    5 -- produces a shopping list for a
      single meal plan
    6
    7 create type app.shopping_list_item
      as (
    8   product_id BIGINT,
    9   product_name text,
   10  quantity numeric,
   11  unit text
   12 );
   13
   14 create or replace function app.
     meal_plan_shopping_list(p app.
     meal_plan) returns setof app.
     shopping_list_item as $$
   15
   16 select app.product.id, app.product.
     name_en, SUM(app.measure.quantity)
     , app.measure.unit
   17 from app.meal_plan
   18 JOIN app.meal_plan_entry on app.
     meal_plan_id=app.meal_plan_entry.
     meal_plan_id
   19 JOIN app.measure on app.
     meal_plan_entry.meal_id=app.
```

- Full Stack developer
- Meal Planner for Greener Village clients to enable them to make healthy choices & budget
- Implemented in React JS, GraphQL, PostgreSQL



```
rc > planpage > JS DuplicateMealPlan.jsx > duplicateMealPlan.jsx
You, seconds ago | 1 author (You)
import React from 'react';
import graphql from 'babel-plugin-relay/macro';
import { Button } from '@material-ui/core';
import { commitMutation } from 'relay-runtime';
import environment from '../relay-environment';

const duplicatePlanMutation = graphql`
mutation DuplicateMealPlanMutation(
  $mealPlanId: BigInt!,
  $pId: BigInt!
) {
  duplicateMealPlan(input: {mealplanId:
    $mealPlanId, pId: $pId}) {
    mealPlan {
      id
      personId
      rowId
      nameEn
      nameFr
      descriptionEn
      descriptionFr
      person {
        id
        rowId
        fullName
      }
    }
  }
}

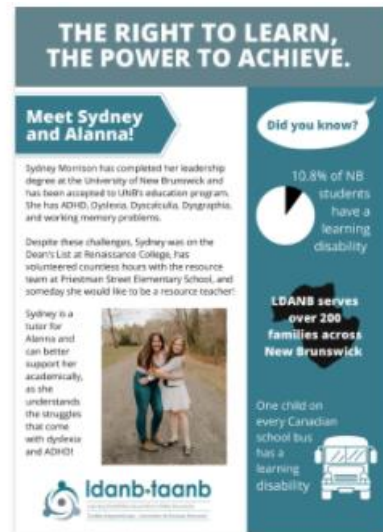
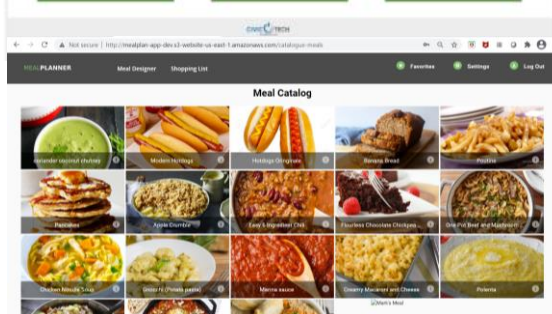
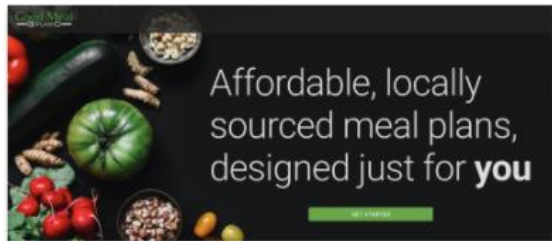
selectedP (JSX attribute) CommonProps<M extends
  <Fragment
  <Grid className= {classes.meals} item xs={4}
  >
  <div className="plan-options-container">
  <CreatePlanOptions
    createPlanOptionsFragment={props}
  />
  </div>
  </Grid>
  <Grid item xs={printOpen ? 12 : 8}
    className={classes.planTable}>
  <Typography variant="h6" className={classes.
    printHeader}>
  {selectedPlan.nameEn} - {selectedPlan.
    person.fullName}
  </Typography>
  <Button className = {classes.printButton}
    to="#"
    onClick={()=>{
      setPrintOpen(true);
      setTimeout(()=> window.print(), 100);
      window.onafterprint = () => {
        setPrintOpen(false);
        window.onafterprint = null;
      };
    }};
  </Button>
  </Grid>
  </Fragment>
```



Atlantic Canada  
Opportunities  
Agency

# An Innovative Approach to Business Networking & Employment Support

## Ekaterina Pavlova



- Building my design portfolio
- Meal Planner interface
- Breakfast Club social media posts
- Basic Income NB branding
- LDANB – STU SW Students poster



Atlantic Canada  
Opportunities  
Agency

# A Novel Approach to Business Networking & Employment Support

## Kate Walsh



- [L'Arche Canada Prototype lab Connecting Developers with those with intellectual disabilities looking for accessible housing](#)
- National Housing Day
- Support Sandi on all projects

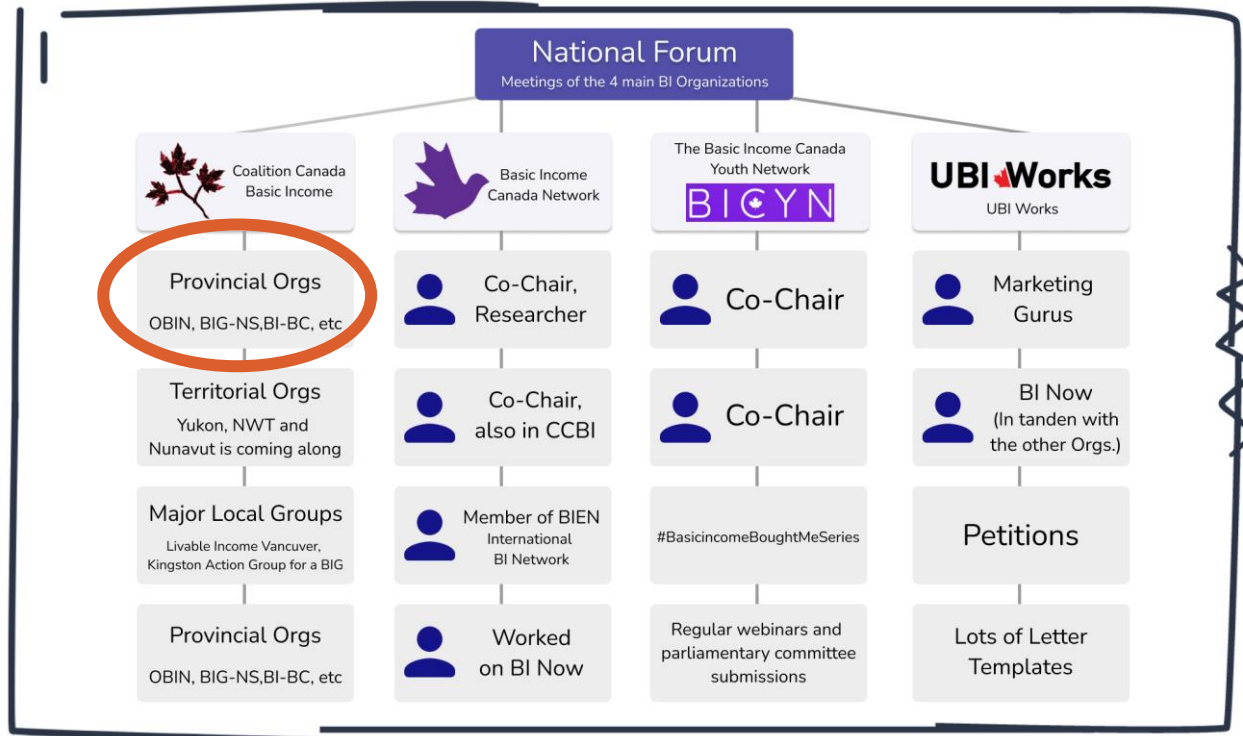




# Saint Thomas University Social Work Social Action Students Creating a Basic Income NB Coalition

Mandy Arsenault

## Basic Income Organization Chart



- Create a Basic Income NB Coalition
- National environmental scan
- Ekaterina's design 😊



# Saint Thomas University Social Work Social Action Students Creating a Basic Income NB Coalition

Emilee Thibodeau

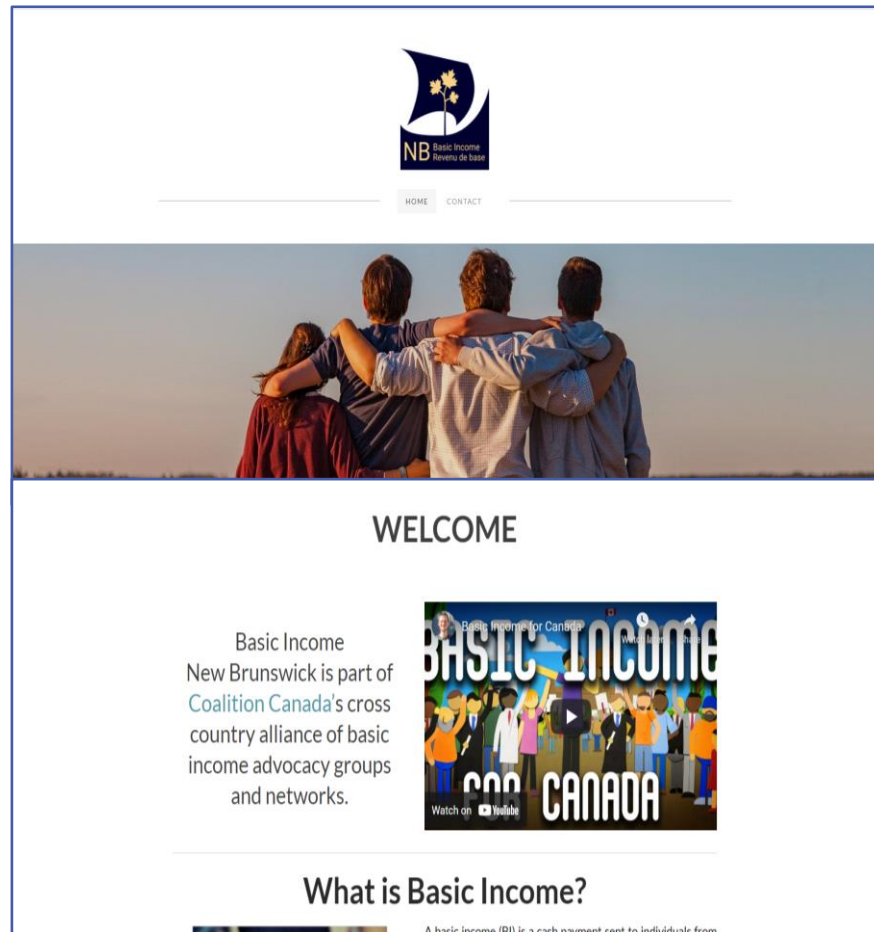


- Education & Action plan
- Dispel myths – Did You Know campaign
- Create social media awareness



# Saint Thomas University Social Work Social Action Students Creating a Basic Income NB Coalition

## Cassandra Swift



- Develop the Basic Income NB Website
- Call to Action in collaboration with BI Atlantic
- NB BI Coalition member recommendations





# UNB's Renaissance College Community Problem Solving Placement

## Sheehan Flatt

**Bullying & Exclusion Effects on Mental Health**

<b>Short Term Effects*</b>	<b>Long Term Effects*</b>
Anxiety	Generalized anxiety
Depression	Panic disorder
Low self-esteem	Agoraphobia
Difficulty sleeping	Depression
Self-harm	Loneliness
Suicidal thoughts	School avoidance

In 2019, 38,982 students responded to the NB Student Wellness Survey.

**What's Happening in Our Schools?**

**Be part of the solution #DoBetter4Me**

Data Sources:  
New Brunswick Health Council - Student Wellness Survey - https://nbhcc.ca/it/evaluation/above-grades-6-12-2019-2019  
\*2018 Psychology, Health, Psychiatry, Department of Bullying and Peer Related by Tracy in Children's "Accumulation of Bullying Behavior at 8 Years of Age and Risk of Specialized Services for Psychiatric Disorders by 20 Years of Age"  
\*\*Journal of Children and Family Studies, "Community Bullying Experiences, Addressed Behaviors and Mental Health, and Academic Achievement in a Large Sample of Prepubertal, Intermediate, and Adolescent Children"  
\*The Lancet, "Adolescent mental health consequences of peer bullying and cyberbullying in adolescent twin cohorts in ten countries"  
\*Journal of Children and Family Studies, "The Role of School Bullying in the Development of Self-Harm"  
\*UNB's National Bullying Prevention Center, "Bullying Statistics"  
\*UNB's National Bullying Prevention Center, "What is Bullying?"  
\*UNB's National Bullying Prevention Center, "What is Bullying?"  
\*UNB's National Bullying Prevention Center, "What is Bullying?"

**CIVIC TECH**  
FREDERICTON

**UNB**  
Renaissance  
College

**GOOD HEALTH AND WELL-BEING**

- UNB Data Visualization Competition UN SDG #3
- NB Student Wellness Survey
- Bully & exclusion in our schools
- #DoBetter4Me to see video

# UNB's Renaissance College Community Problem Solving Placement

## Anna Chandra



- Caring Calendar
- Re-engaging our Faith-based groups and service providers



# UNB's Renaissance College Community Problem Solving Placement

## Marisel Horncastle



- Aging in Place environmental scan
- SWAG members Norma Dube & Yves Boutot





# Our Team!





# Questions??

February 24, 2022



**GREATER  
FREDERICTON  
SOCIAL INNOVATION**



**INNOVATION SOCIALE  
DE LA RÉGION DE  
FREDERICTON**